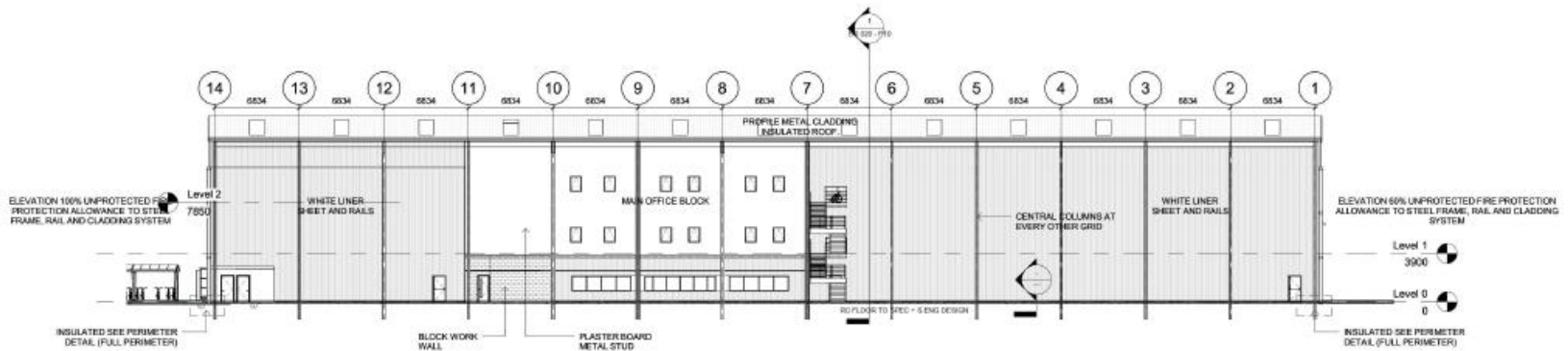
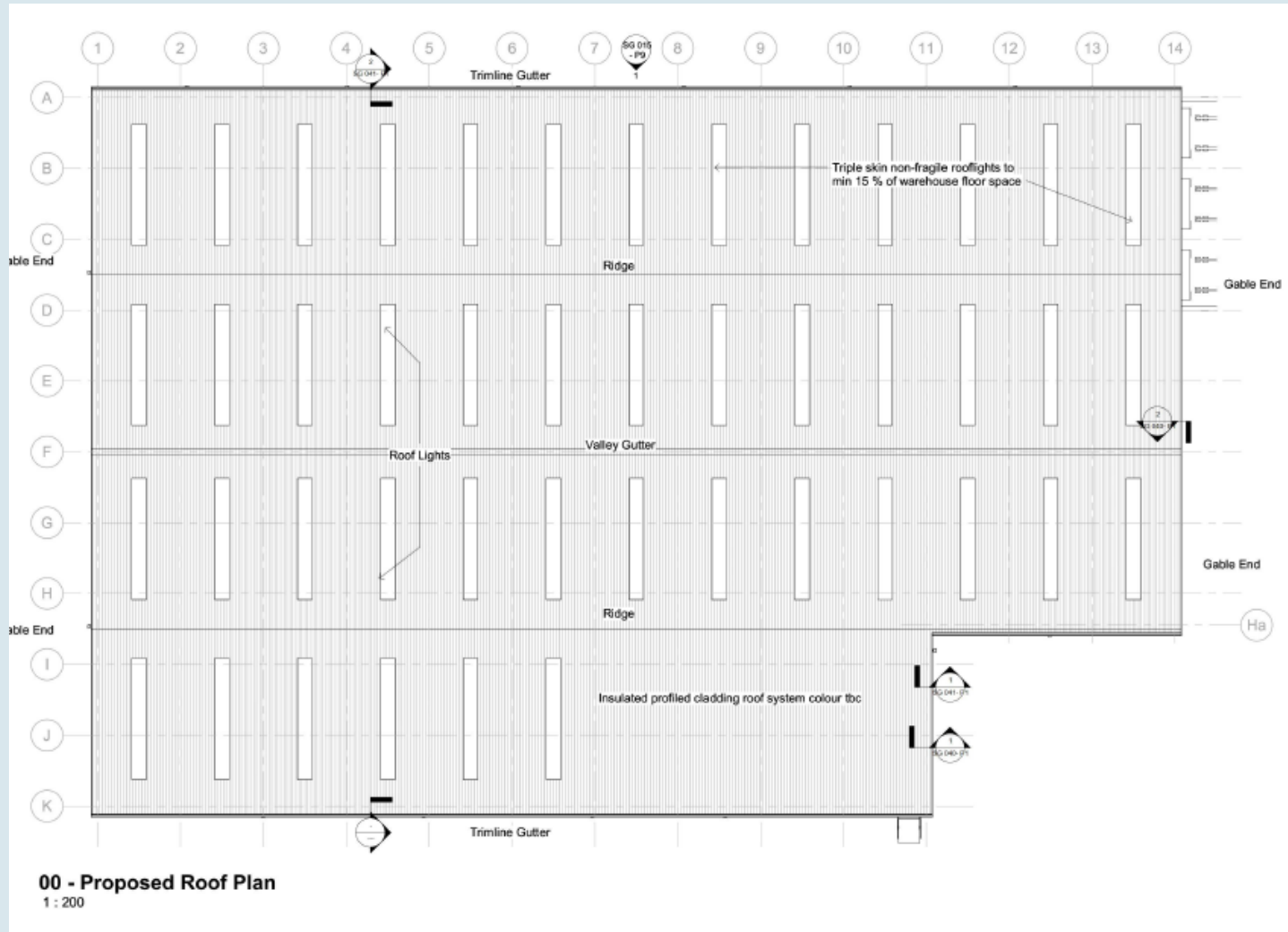


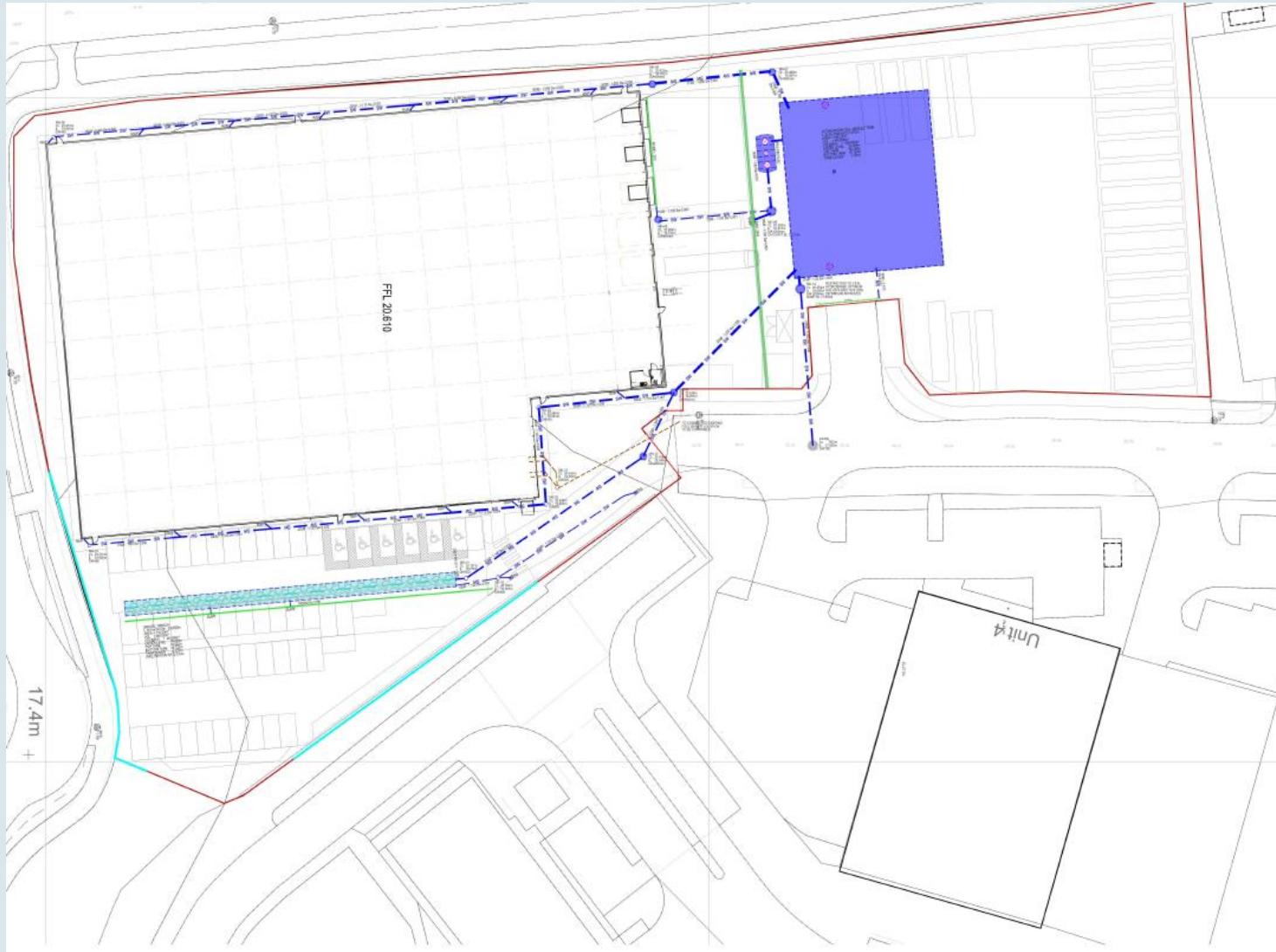
00 - Section 1
1 : 200



00 - Section 2
1 : 200









Cycle shelters location

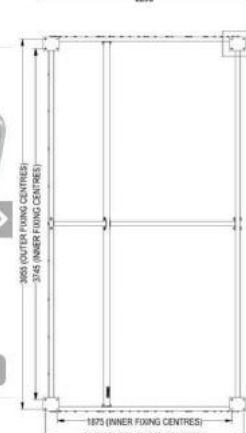
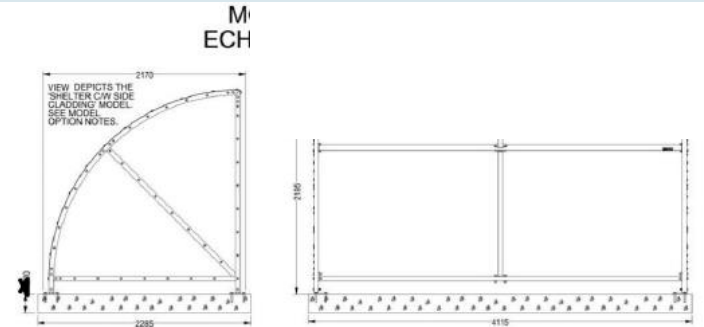


2 No Bike Racks each with 6

Specifications

Warranty 1 year parts / labour

CYCLE-MULTI	
Height (mm)	275
Width (mm)	1320
Weight (kg)	9
Colour	Silver
Material	Steel



PRODUCT INFORMATION:

- DESCRIPTION - ARMORTEC COATED STEEL CYCLE SHELTER
- MATERIAL - FRAME : ARMORTEC COATED MILD STEEL
- PANELS : CLEAR POLYCARBONATE (3mm THICK SHEET)
- DIMENSIONS - ALL DIMENSIONS IN mm UNLESS OTHERWISE STATED
- WEIGHT - STANDARD SHELTER : 192kg
- SHELTER C/W OPTIONAL SIDE PANEL KIT : 219kg

MODEL OPTIONS

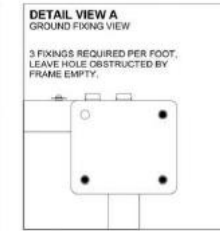
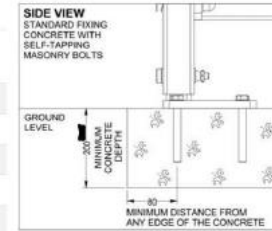
- STANDARD CYCLE SHELTER
- CYCLE SHELTER COMPLETE WITH END CLADDING

OPTIONAL EXTRAS

- ANTI-TAMPER GROUND FIXING KIT
- 6 PLACE 'TOAST RACK' CYCLE STAND
- 16 PLACE 'TOAST RACK' CYCLE STAND
- SINGLE 'SHEFFIELD HOOP' CYCLE STAND

INSTALLATION INSTRUCTIONS

- THIS PRODUCT MUST BE PERMANENTLY GROUND FIXED IMMEDIATELY AFTER ARRIVAL. WE STRONGLY RECOMMEND USING THE PROVIDED SELF-TAPPING MASONRY BOLTS FOR FIXING. IF USING YOUR OWN FIXINGS ENSURE 25mm WASHERS ARE USED.
- INSTALL THE SHELTER ON A SOUND CONCRETE FOUNDATION. MINIMUM DIMENSIONS 4115 x 2285 x 200mm DEEP. 12 HOLES (Ø 10mm x 120mm MINIMUM DEPTH) TO BE DRILLED FOR GROUND FIXING BOLTS. REFER TO 'DETAIL VIEW A' FOR EXTRA INSTRUCTION. ENSURE HOLES ARE LOCATED AT LEAST 80mm FROM ANY EDGE OF THE CONCRETE FOUNDATION.
- WHEN INSTALLING ON TARMAC OR BLOCK PAVING A CONCRETE BASE IS REQUIRED TO PROVIDE A SECURE FIXING POINT.
- THE SHELTER MUST NOT BE DIRECTLY INSTALLED INTO BLOCK PAVING OR TARMAC.
- THE ANTI-TAMPER GROUND FIXING KIT CAN BE USED IN CONJUNCTION WITH EACH GROUND FIXING FOR ADDITIONAL SECURITY.



Glasdon
Glasdon group Ltd.

Website: www.glasdon.com
Email: sales@glasdon.com
Telephone: 01253 600 400
Facsimile: 01253 732558

ISSUE 02
SHEET SIZE : A0



