

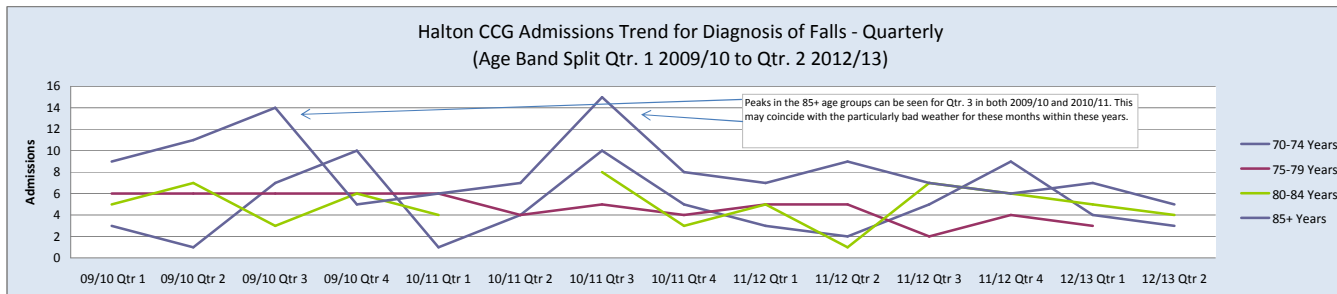
Data taken from SUS for Halton CCGs Main Providers - St Helens & Knowsley Hospital and Warrington Hospital

Criteria - Patients above the age of 65years who have had a Primary or Secondary Diagnosis code of Falls under the ICD-10 codes of W00 - Falls on same Level involving Ice & Snow and W01 - Fall on same level from slipping, tripping and stumbling .

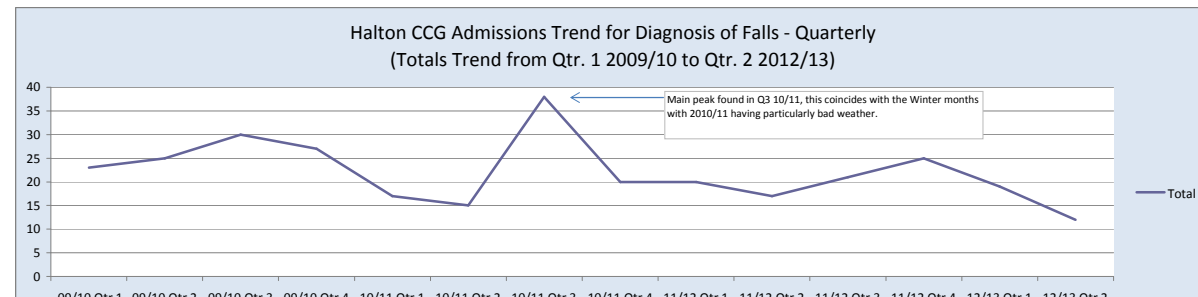
Providers	2009/2010					2010/2011					2011/2012					2012/2013		
	Qtr 1	Qtr 2	Qtr 3	Qtr 4	09/10 Total	Qtr 1	Qtr 2	Qtr 3	Qtr 4	10/11 Total	Qtr 1	Qtr 2	Qtr 3	Qtr 4	11/12 Total	Qtr 1	Qtr 2	12/13 Sub Total
ST HELENS AND KNOWSLEY HOSPITALS NHS TRUST	16	17	24	12	69	9	7	22	13	51	15	6	13	12	46	14	10	24
WARRINGTON AND HALTON HOSPITALS NHS FOUNDATION TRUST	7	8	6	15	36	8	8	16	7	39	5	11	8	13	37	5	2	7
Grand Total	23	25	30	27	105	17	15	38	20	90	20	17	21	25	83	19	12	31

Age Bands	2009/2010					2010/2011					2011/2012					2012/2013			Overall Total
	Qtr 1	Qtr 2	Qtr 3	Qtr 4	09/10 Total	Qtr 1	Qtr 2	Qtr 3	Qtr 4	10/11 Total	Qtr 1	Qtr 2	Qtr 3	Qtr 4	11/12 Total	Qtr 1	Qtr 2	12/13 Sub-Total	
70-74 Years	3	1	7	10	21	1	4	10	5	20	3	2	5	9	19	4	3	7	67
75-79 Years	6	6	6	6	24	6	4	5	4	19	5	5	2	4	16	3		3	62
80-84 Years	5	7	3	6	21	4	4	8	3	15	5	1	7	6	19	5	4	9	64
85+ Years	9	11	14	5	39	6	7	15	8	36	7	9	7	6	29	7	5	12	116
Grand Total	23	25	30	27	105	17	15	38	20	90	20	17	21	25	83	19	12	31	309

*85yrs+ Group stands out as the highest admission rate for Falls.



Diagnosis of Fall	2009/2010					2010/2011					2011/2012					2012/2013		
	Qtr 1	Qtr 2	Qtr 3	Qtr 4	09/10 Total	Qtr 1	Qtr 2	Qtr 3	Qtr 4	10/11 Total	Qtr 1	Qtr 2	Qtr 3	Qtr 4	11/12 Total	Qtr 1	Qtr 2	12/13 Sub-Total
Fall on same level from slipping, tripping and stumbling	23	24	26	20	93	17	15	30	19	81	20	17	19	23	79	18	12	30
Fall on same level involving ice and snow	1	4	7	12	24	8	1	9	9	27	2	2	2	4	11	1		1
Grand Total	23	25	30	27	105	17	15	38	20	90	20	17	21	25	83	19	12	31



Admission Method	2009/2010					2010/2011					2011/2012					2012/2013		
	Qtr 1	Qtr 2	Qtr 3	Qtr 4	09/10 Total	Qtr 1	Qtr 2	Qtr 3	Qtr 4	10/11 Total	Qtr 1	Qtr 2	Qtr 3	Qtr 4	11/12 Total	Qtr 1	Qtr 2	12/13 Sub-Total
Emerg Oth		1			1	1		1	1	3								
Emerg-A/E	23	24	30	26	103	16	15	35	19	85	19	16	20	24	79	18	11	29
Emerg-Clin								2		2						1		1
Emerg-GP				1	1						1	1	1		3		1	1
Other Prov													1		1			
Grand Total	23	25	30	27	105	17	15	38	20	90	20	17	21	25	83	19	12	31

*Admissions via A&E are the most common and follow the overall downward trend of Admissions for falls.