

PLAN 1b

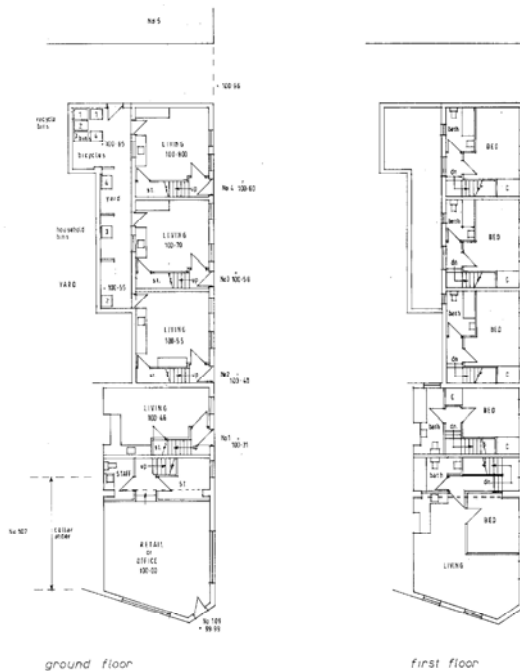
PLAN NUMBER 08/00579/COU

LAYOUT PLAN

**DEVELOPMENT CONTROL
COMMITTEE**

12th January 2009

08/00579/c



This plan was produced from a combination of O.S. map information and other topographical or historical sources. It is not intended to be used as a legal document. It is the responsibility of the user to ensure that the plan is accurate and up-to-date. It is not intended to be used as a legal document. It is the responsibility of the user to ensure that the plan is accurate and up-to-date.

K. & J. WOODWARD Chartered Architects		
P.O. Box 58, Ashbury House, Liverpool L11 Tel: 0151 724 1780 Fax: 0151 464 180		
Project: 109 ALBERT ROAD WIDNES		
Dwg No: proposal		
Date: 3-08	Scale: 1/100	Dwg No: 4548